

Dynamic Radio Cooperation for Downlink Cloud-RANs with Computing Resource Sharing

Tuyen X. Tran and Dario Pompili
 Department of Electrical and Computer Engineering
 Rutgers University–New Brunswick, NJ, USA
 E-mails: {tuyen.tran, pompili}@cac.rutgers.edu

Abstract—A novel dynamic radio-cooperation strategy is proposed for Cloud Radio Access Networks (C-RANs) consisting of multiple Remote Radio Heads (RRHs) connected to a central Virtual Base Station (VBS) pool. In particular, the key capabilities of C-RANs in computing-resource sharing and real-time communication among the VBSs are leveraged to design a joint dynamic radio clustering and cooperative beamforming scheme that maximizes the downlink weighted sum-rate system utility (WSRSU). Due to the combinatorial nature of the radio clustering process and the non-convexity of the cooperative beamforming design, the underlying optimization problem is NP-hard, and is extremely difficult to solve for a large network. Our approach aims for a suboptimal solution by transforming the original problem into a Mixed-Integer Second-Order Cone Program (MI-SOCP), which can be solved efficiently using a proposed iterative algorithm. Numerical simulation results show that our low-complexity algorithm provides close-to-optimal performance in terms of WSRSU while significantly outperforming conventional radio clustering and beamforming schemes. Additionally, the results also demonstrate the significant improvement in computing-resource utilization of C-RANs over traditional RANs with distributed computing resources.

Index Terms—Cloud radio access networks; dynamic clustering; joint beamforming; computing resource sharing.

I. INTRODUCTION

Overview: The proliferation of personal mobile-computing devices along with a plethora of data-intensive mobile applications has resulted in a tremendous increase in demand for ubiquitous and high-data-rate wireless communications over the last few years. To cope with this challenge, the current trend in cellular networks is to increase the densification of small cells and to leverage the cooperation among multiple antennae and base stations (BSs). In this way, higher system throughput and reduced interference can be achieved via Coordinated Multi-Point (CoMP) transmission and reception techniques [1], which have been adopted in 3GPP Long-Term Evolution (LTE)-Advanced. In CoMP, a set of neighboring cells are grouped into clusters, each consisting of connected BSs that share Channel State Information (CSI) and user signals. This scheme allows for joint processing among BSs that can effectively mitigate the Inter-Cell Interference (ICI) and thus improve the spectral efficiency. However, in current cellular-network architectures, physical links only exist between BSs and their corresponding access network gateway and thus, the control signaling between BSs needed to realize CoMP has to travel through costly backhaul links, and often

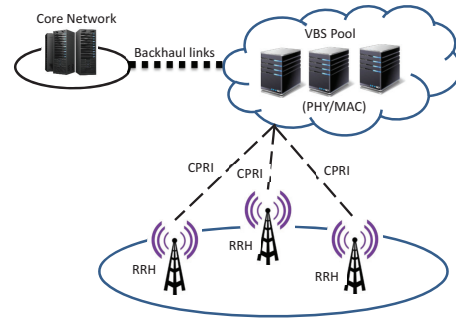


Fig. 1. Cloud Radio Access Network (C-RAN) Architecture.

over a one-level higher layer in the aggregation hierarchy. Consequently, the latency and scarce interconnection capacity among BSs have resulted in limited deployments of CoMP in practice and, in turn, in modest BS cooperation.

Recently, Cloud Radio Access Network (C-RAN) [2]–[4] architecture has been introduced as a new paradigm for broadband wireless access that allows for dynamic reconfiguration of computing resources and provides a higher degree of cooperation as well as communication among the BSs. The fundamental characteristics of C-RAN can be summarized as i) centralized management of computing resources, ii) reconfigurability of spectrum resources, iii) collaborative communications, and iv) real-time cloud computing on generic platforms. A typical C-RAN, as shown in Fig. 1, is composed of three main parts: 1) Remote Radio Heads (RRHs) plus antennae, which are located at the cell sites and are controlled remotely by Virtual Base Stations (VBSs) housed in a centralized VBS pool, 2) the Base Band Unit (BBU) (VBS pool) composed of high-speed programmable processors and real-time virtualization technology to carry out digital processing tasks, 3) low-latency, high-bandwidth Common Public Radio Interface (CPRI), which connects the RRHs to the VBS pool.

In this paper, we aim to realize the benefits offered by C-RANs to improve the cellular network performance via dynamic adaptation of radio clusters and computing resources. Firstly, the co-location model of the VBSs allows for their real-time intercommunication, thus fully enabling a coordinated joint transmission of RRHs that is currently practically constrained. In particular, control signals to realize CoMP

between the BSs that traditionally travel via back-haul links can now be exchanged through the InfiniBand interconnection among the VBSs. A C-RAN-based radio-cooperation scheme would be fully dynamic and user specific, in the sense that we can form a virtual cluster of RRHs to coordinate their downlink transmissions to each of the scheduled users. In this strategy, each scheduled user is always the central of a RRH cluster, making it different from the traditional CoMP techniques where the RRHs are grouped into fixed and non-overlapping clusters.

Related Works: Pioneering works on realizing the benefit of C-RANs have focused on the overall system architecture with emphasis on system issues, feasibility of virtual software base station stacks, performance requirements and analysis of optical links between RRHs and their VBSs [2], [5], [6]. On the other hand, considerable attention has also been paid on cooperative communications techniques for C-RAN under various different objectives. For example, in [7] the authors propose a blind source separation strategy to mitigate interference in uplink C-RAN; in [8], [9] the authors consider a network power minimization problem. In addition, the optimal tradeoff design between transmit power and backhaul capacity is studied in [10], while the tradeoff between transmit power and delay performance is investigated in [11] via a cross-layer based approach.

In this paper, we study a dynamic radio cooperation technique and consider Weighted Sum-Rate System Utility (WSRSU) as the performance metric under a practical constraint on computing resources at the VBS pool. Note that the BS cooperation for WSRSU maximization problem has been studied in traditional CoMP systems. However, due the scarce interconnection among the BSs and the lack of global CSI available at each BS, existing clustering and cooperative beamforming techniques are mostly heuristic-based (i.e., the clustering decision is made based on the relative signal strength and locations of the users, and the beamforming design is not adaptive to *inter-cluster interference*) [12]–[14].

Our Contributions: In this paper, we propose a novel dynamic radio cooperation strategy for C-RANs that takes advantage of real-time communication and computing-resource sharing among the VBSs. Unlike existing methods, our approach makes the joint clustering and beamforming decision based on global CSI available at the VBS pool, thus being able to mitigate both the *intra-cluster* and *inter-cluster* interference in order to significantly improve the system’s performance. Our proposed solution dynamically groups the RRHs into user-specific (potentially overlapping) clusters and designs the downlink beamformers at each RRH in order to maximize the WSRSU function. In particular, within each scheduling interval, i.e., a time-frequency resource block, a group of RRHs is identified to serve each scheduled user. To realize the proposed *Dynamic Radio Cooperation (Dynamic-RC)* strategy, we formulate the associated optimization problem, which we also refer to as the *Dynamic-RC problem*, that aims to maximize the WSRSU under the transmit power constraints at the RRHs and the total computing-resource constraint at

the VBS pool. Due to the combinatorial nature of the radio clustering process and the non-convexity of the cooperative beamforming design, the *Dynamic-RC* problem is extremely difficult to solve optimally in practical (polynomial) time for a system with a large number of users and RRHs. To overcome this drawback and solve the problem efficiently, our approach aims for a suboptimal solution with reasonable complexity. In particular, we exploit *conic programming* techniques [15] and the $l1$ -norm reweighting approximation methods from Compressive Sensing which were originally proposed for sparse signal recovery [16], in order to quickly identify the optimal clustering decision and beamforming design.

We propose an iterative algorithm to solve the *Dynamic-RC* problem. In each iteration, the clustering decision is temporarily fixed and a *Cooperative Beamforming Design (CBD)* problem is solved using Second-Order Cone Programming (SOCP) technique. The optimal beamforming solution obtained from the CBD problem is used to adjust the clustering decision via $l1$ -norm reweighting technique. As such, the joint clustering and beamforming design is quickly identified and is adaptive to the global network condition.

Numerical simulations are carried out extensively in various user distribution scenarios and demonstrate that our proposed low-complexity *Dynamic-RC* strategy significantly improves the WSRSU performance over conventional radio clustering and beamforming schemes. Furthermore, the results also show the great potential gains of C-RANs using our *Dynamic-RC* strategy over distributed RANs in terms of computing resource and transmit power utilization.

Paper Organization: The remainder of this paper is organized as follows: in Sect. II, we present the considered system model and formulate the problem under study; in Sect. III, we discuss the analysis and solution to the cooperative beamforming design problem with a fixed clustering decision; in Sect. IV, the *Dynamic-RC* strategy via dynamic radio clustering and beamforming design is solved via our proposed iterative algorithm; simulation results are illustrated in Sect. V and, finally, Sect. VI concludes the paper and points to future work.

II. SYSTEM MODEL AND PROBLEM FORMULATION

In this section, we firstly introduce the system model of the considered downlink C-RAN system and discuss the computing-resource constraint. The proposed dynamic radio cooperation strategy is then formulated as a joint clustering and beamforming design problem.

A. System Model

We consider a multi-user, multi-cell C-RAN downlink system, where each cell has one RRH that connects to a common VBS pool via high-capacity backhaul links. Let $\mathcal{R} = \{1, 2, \dots, R\}$ be the set of RRHs and $\mathcal{U} = \{1, 2, \dots, U\}$ be the set of active users in the system. We assume that each RRH r has N_r antennae while, realistically, all the users are equipped with only a single antenna. Note that the solutions proposed can be trivially extended to the multi-antenna-user

case. The RRHs cooperate with each other to form virtual user-specific clusters, i.e., each RRH cluster is formed for a scheduled user, while each RRH can be part of multiple clusters. Hence, the number of virtual clusters is equal to the number of scheduled users in the system, which may be smaller than the number of total active users. Let $\mathcal{S} = \{s_u^r | u \in \mathcal{U}, r \in \mathcal{R}\}$ be the clustering decision, in which s_u^r is a binary variable equal to 1 if RRH r is selected to serve user u , and 0 otherwise. Consequently, let $\mathcal{V}_u = \{r \in \mathcal{R} | s_u^r = 1\}$ denote the serving cluster of user u . We consider the system in a single time-frequency resource block, which is considered to be spatially reused across all the users. As such, each RRH can simultaneously serve at most N_r users; otherwise, the users will suffer from intra-cluster interference.

We assume that each user has a single traffic flow that is independent of all other users' flows. Baseband signals for user u and the corresponding downlink beamforming information after being processed at the VBS pool will be transported to all the RRHs in the serving cluster \mathcal{V}_u . In each scheduling slot, all the RRHs in \mathcal{V}_u will jointly transmit the normalized symbol $x_u \in \mathbb{C}$ of unit power to user u . It is assumed that the signals for different users are independent from each other and from the receiver noise. Now, let $\mathbf{w}_u^r \in \mathbb{C}^{N_r \times 1}$ be the linear downlink beamforming vector at RRH r corresponding to user u and $\mathbf{W} = \{\mathbf{w}_u^r | \forall u \in \mathcal{U}, r \in \mathcal{R}\}$ denote the network beamforming design. Note that \mathbf{W} also implies the scheduling decision, i.e., user u is not scheduled for the current time-frequency slot if $\mathbf{w}_u^r = \mathbf{0}, \forall r \in \mathcal{R}$. In the current scheduling slot, the received signal $y_u \in \mathbb{C}$ at user u is,

$$y_u = \underbrace{\sum_{r \in \mathcal{V}_u} \mathbf{h}_u^r \mathbf{w}_u^r x_u}_{\text{desired signal}} + \underbrace{\sum_{u' \in \mathcal{U}, u' \neq u} \sum_{r' \in \mathcal{V}_{u'}} \mathbf{h}_u^{r'} \mathbf{w}_{u'}^{r'} x_{u'}}_{\text{interference}} + z_u, \quad (1)$$

where $\mathbf{h}_u^r \in \mathbb{C}^{1 \times N_r}$ is the channel coefficient vector from RRH r to user u , z_u is the zero-mean circularly symmetric Gaussian noise denoted as $\mathcal{CN}(0, \sigma^2)$. For simplicity, let $\Psi_{u,u'} = \sum_{r' \in \mathcal{V}_{u'}} \mathbf{h}_u^{r'} \mathbf{w}_{u'}^{r'}$ and $\Psi_u = \Psi_{u,u} = \sum_{r \in \mathcal{V}_u} \mathbf{h}_u^r \mathbf{w}_u^r$. With this position, the received Signal-to-Interference-plus-Noise Ratio (SINR) at user u is,

$$\gamma_u = \frac{|\Psi_u|^2}{\sum_{u' \in \mathcal{U}, u' \neq u} |\Psi_{u,u'}|^2 + \sigma^2}. \quad (2)$$

Thus, under the clustering decision \mathcal{S} and the beamforming design \mathbf{W} , the Shannon transmission rate of user u can be calculated as $R_u(\mathcal{S}, \mathbf{W}) = \eta B \log_2(1 + \mu \gamma_u)$, in which B [Hz] is the channel bandwidth and $\eta, \mu \in [0, 1]$ account for the spectral and the coding efficiencies, respectively. Unless otherwise stated, for notation simplicity in the subsequent analysis we will assume $B = \eta = \mu = 1$ and consider the normalized rate (bits/s/Hz). Hence, the rate R_u simplifies to,

$$R_u(\mathcal{S}, \mathbf{W}) = \log_2(1 + \gamma_u). \quad (3)$$

Computing resource constraint: The VBS pool consists of a set of interconnected VBSs hosted in the physical-server

infrastructure of a datacenter. Each VBS performs baseband processing for a certain set of users, and by leveraging virtualization technology, these VBSs can flexibly share the common computing resource of the physical server pool. Recently, the implementation of software VBSs on General-Purpose Platform (GPP) has been realized (see, for example, [5], [6]). Profiling results on these systems have revealed that the utilized computing resource at a VBS is an increasing function of the accumulated data rates processed by that VBS. Therefore, it is reasonable to argue that the total computing-resource capacity of the VBS pool places a *cap* on the total data rates of the users in the network. In general, the computing-resource capacity of the VBS pool can be modeled as a multi-dimensional vector representing the capacities of the CPUs, memory, and network interfaces. However, for the ease of analysis, we only consider scalar computing capacity in this paper. In particular, let C denote the total computing capacity in the VBS pool that can be flexibly shared among all the VBSs. The computing-resource constraint on the accumulated data rate of all the users in the system can be expressed as

$$\Gamma\left(\sum_{u \in \mathcal{U}} R_u\right) \leq C, \quad (4)$$

where R_u is the data rate of user u given in (3) and $\Gamma(\cdot)$ is an increasing function specifying the relationship between the utilized computing resource and the accumulated user data rate¹. It should be noted that for a traditional system with distributed computing resource at the RRHs, the accumulated data rate processed at each RRH r will be subject to the per-RRH computing-resource constraint $C_r < C$, i.e.,

$$\Gamma\left(\sum_{u \in \mathcal{U}} s_u^r R_u\right) \leq C_r, \forall r \in \mathcal{R}. \quad (5)$$

B. Joint Clustering and Beamforming Problem Formulation

Our objective is to maximize the WRSRU under the transmit power constraint at each RRH and the total computing-resource constraint at the VBS pool. It is assumed that the capacity of the front-haul links connecting RRHs to the VBS pool is sufficiently provisioned to accommodate peak-capacity demand. Our proposed dynamic radio cooperation strategy involves finding the optimal clustering decision \mathcal{S}^* and the optimal beamforming design \mathbf{W}^* , and can be formulated as,

$$(\mathcal{S}^*, \mathbf{W}^*) = \underset{\substack{\{s_u^r, \mathbf{w}_u^r\} \\ r \in \mathcal{R}, u \in \mathcal{U}}}{\text{argmax}} \sum_{u \in \mathcal{U}} q_u R_u(\mathcal{S}, \mathbf{W}) \quad (6a)$$

$$\text{s.t.} \quad \sum_{u \in \mathcal{U}} \|\mathbf{w}_u^r\|_2^2 \leq P_r, \forall r \in \mathcal{R}, \quad (6b)$$

$$\|\mathbf{w}_u^r\|_2^2 \leq s_u^r P_r, \quad (6c)$$

$$\sum_{u \in \mathcal{U}} R_u(\mathcal{S}, \mathbf{W}) \leq \Omega, \quad (6d)$$

$$\sum_{u \in \mathcal{U}} s_u^r \leq N_r, s_u^r \in \{0, 1\}, \quad (6e)$$

¹The realization of $\Gamma(\cdot)$ can be obtained by carefully profiling the VBSs at different level of offered load in a practical C-RAN implementation.

where $q_u, u \in \mathcal{U}$, is the utility marginal function corresponding to user u , which can represent the user-specific Quality of Service (QoS) or priority in the system, P_r [W] is the per-RRH transmission power constraint and $\Omega = \arg \Gamma(C)$. Constraint (6c) indicates the coupling between the assignment variable s_u^r and the beamforming vector \mathbf{w}_u^r , i.e., $\mathbf{w}_u^r = \mathbf{0}$ when $s_u^r = 0$. We refer to (6) as the dynamic radio cooperation (*Dynamic-RC*) problem. In fact, this is a Mixed-Integer Non-Linear Program (MINLP), which is intractable in practical time. Specifically, even when the binary variables s_u^r are fixed, solving for \mathbf{w}_u^r is still NP-hard.

Given a large number of variables that scales linearly with the number of users and RRHs in the system, finding a low-complexity, suboptimal solution is highly desirable. To this end, we firstly solve the Cooperative Beamforming Design (CBD) problem with given clustering decision \mathcal{S} , and propose a low-complexity iterative algorithm to solve the *Dynamic-RC* problem to a local optimum. Specifically, in Sect. III, we will transform the CBD problem into a SOCP with a fixed clustering decision, and will take advantage of the existing efficient SOCP algorithms. The *Dynamic-RC* problem will then be solved in Sect. IV using the iterative $l1$ -norm reweighting technique, which solves the CBD problem and updates the clustering decision in each iteration.

III. COOPERATIVE BEAMFORMING WITH FIXED CLUSTERING DECISION

In this section, we consider the problem of Cooperative Beamforming Design (CBD) for a given radio clustering decision \mathcal{S} . In particular, for given $\{s_u^r\}$ satisfying constraints (6e), we need to find the optimal downlink beamformers $\{\mathbf{w}_u^r\}$ by solving the CBD problem below,

$$\max_{\mathbf{w}_u^r, r \in \mathcal{R}, u \in \mathcal{U}} \sum_{u \in \mathcal{U}} q_u R_u(\mathcal{S}, \mathbf{W}) \quad (7a)$$

$$\text{s.t.} \quad \sum_{u \in \mathcal{U}} \|\mathbf{w}_u^r\|_2^2 \leq P_r, \forall r \in \mathcal{R}, \quad (7b)$$

$$\sum_{u \in \mathcal{U}} R_u(\mathcal{S}, \mathbf{W}) \leq \Omega. \quad (7c)$$

Observe that the rate functions R_u 's appear in *both* the constraint and objective of (7), making the problem difficult to deal with. To decouple this problem with respect to (w.r.t.) R_u 's, we remove the constraint (7c) and consider the *relaxed-CBD* problem with constraint (7b) only. The solution $\{\tilde{\mathbf{w}}_u^r\}$ of the *relaxed-CBD* problem will be verified against constraint (7c) so to finally obtain the solution of the original CBD problem by solving an additional *feasibility* problem. In the following subsections, the *relaxed-CBD* first and then the *feasibility* problem will be addressed sequentially.

A. Relaxed-CBD Problem

The *relaxed-CBD* problem is rewritten from (7) without the computing-capacity constraint (7c), and is cast as follows,

$$\max_{\mathbf{w}_u^r, r \in \mathcal{R}, u \in \mathcal{U}} \sum_{u \in \mathcal{U}} q_u R_u(\mathcal{S}, \mathbf{W}) \quad (8a)$$

$$\text{s.t.} \quad \sum_{u \in \mathcal{U}} \|\mathbf{w}_u^r\|_2^2 \leq P_r, \forall r \in \mathcal{R}. \quad (8b)$$

This is in fact a weighed sum-rate maximization problem, which is widely known to be NP-hard. Our approach aims for a local solution using a low-complexity algorithm designed by effectively exploiting the techniques of SOCP.² In order to use the efficient algorithms developed for SOCP, one must reformulate the problem into the standard form that the algorithms (e.g., those proposed in [17]) are capable of dealing with. Firstly, from (3), objective function (8a) is rewritten as,

$$\sum_{u \in \mathcal{U}} q_u R_u(\mathcal{S}, \mathbf{W}) = \sum_{u \in \mathcal{U}} \log_2(1 + \gamma_u)^{q_u}. \quad (9)$$

Now, by introducing the variables t_u 's, $u \in \mathcal{U}$, we can recast the *relaxed-CBD* problem in (8) as,

$$\max_{\mathbf{w}_u^r, r \in \mathcal{R}, u \in \mathcal{U}} \prod_{u \in \mathcal{U}} t_u \quad (10a)$$

$$\text{s.t.} \quad \gamma_u \geq t_u^{1/q_u} - 1, \forall u \in \mathcal{U}, \quad (10b)$$

$$\sum_{u \in \mathcal{U}} \|\mathbf{w}_u^r\|_2^2 \leq P_r, \forall r \in \mathcal{R}, \quad (10c)$$

which stems from the fact that constraints (10b) are active at the optimum. We now have the following Lemma.

Lemma 1. *Let $\tilde{\mathbf{w}}_u^r = \mathbf{w}_u^r e^{j\phi_u^r}$, where ϕ_u^r is the phase rotation such that the imaginary part of $\mathbf{h}_u^r \tilde{\mathbf{w}}_u^r$ equals to zero, $\forall u \in \mathcal{U}, r \in \mathcal{R}$. If \mathbf{w}_u^r is optimal to (10), then $\tilde{\mathbf{w}}_u^r$ is also optimal.*

Proof. We can represent $\mathbf{h}_u^r \mathbf{w}_u^r$ as $\mathbf{h}_u^r \mathbf{w}_u^r = |\mathbf{h}_u^r \mathbf{w}_u^r| e^{j\theta_u^r}$. By choosing $\phi_u^r = -\theta_u^r$, we have $\mathbf{h}_u^r \tilde{\mathbf{w}}_u^r = \mathbf{h}_u^r \mathbf{w}_u^r e^{j\phi_u^r} = |\mathbf{h}_u^r \mathbf{w}_u^r|$. Recall γ_u given in (2), it is straightforward to verify that substituting \mathbf{w}_u^r by $\tilde{\mathbf{w}}_u^r$, $\forall u \in \mathcal{U}, r \in \mathcal{R}$, into (10) will result in the same objective function and constraints. Thus, if \mathbf{w}_u^r is optimal then $\tilde{\mathbf{w}}_u^r$ is also optimal. \square

Using Lemma 1, we can restrict ourselves to the beamformers in which $\mathbf{h}_u^r \mathbf{w}_u^r \geq 0$, $\forall u \in \mathcal{U}, r \in \mathcal{V}_u$, where each product has a non-negative real part and a zero imaginary part. Notice that constraint (10b) is equivalent to

$$\frac{|\Psi_u|^2}{\sum_{u' \in \mathcal{U}, u' \neq u} |\Psi_{u,u'}|^2 + \sigma^2} \geq t_u^{1/q_u} - 1, \forall u \in \mathcal{U}, \quad (11)$$

which can be recast as,

$$\Psi_u \geq \beta_u \sqrt{t_u^{1/q_u} - 1}, \forall u \in \mathcal{U}, \quad (12)$$

$$\text{and} \quad \sqrt{\sum_{u' \in \mathcal{U}, u' \neq u} |\Psi_{u,u'}|^2 + \sigma^2} \leq \beta_u, \forall u \in \mathcal{U}, \quad (13)$$

²Second-Order Cone Problems (SOCP) are convex-optimization problems in which a linear function is minimized over the intersection of an affine set and the product of second-order (quadratic) cones.

by introducing the slack variables β_u 's and due to the fact that both constraints (12) and (13) are active at the optimum of problem (10). It can be verified that (10c) and (13) follow the Linear Programming (LP) constraint expression with generalized equalities/inequalities, which can be directly written as Second-Order Constraints (SOCs)³ [15]. To deal with the non-convex constraint (12), we further exploit the sequential parametric convex-approximation approach in [18] to approximate (12) as convex as presented in the following.

Firstly, (12) can be rewritten as,

$$\Psi_u \geq \beta_u \sqrt{\xi_u}, \forall u \in \mathcal{U}, \quad (14)$$

$$\xi_u + 1 \geq t_u^{1/q_u}, \forall u \in \mathcal{U}. \quad (15)$$

Observe that, for a given ϕ_u , we have

$$\beta_u \sqrt{\xi_u} \leq \frac{\phi_u}{2} \beta_u^2 + \frac{\xi_u}{2\phi_u}, \quad (16)$$

which follows the inequality of arithmetic and geometric means of $\phi_u \beta_u^2$ and $\xi_u \phi_u^{-1}$. The equality in (16) is achieved when $\phi_u = \sqrt{\xi_u}/\beta_u$, and we get the equivalent form of constraint (14) as,

$$\Psi_u - \frac{\xi_u}{2\phi_u} \geq \frac{\phi_u}{2} \beta_u^2, \forall u \in \mathcal{U}. \quad (17)$$

Furthermore, without loss of generality, we scale q_u 's in (7a) such that $q_u > 1, \forall u \in \mathcal{U}$ to make t_u^{1/q_u} become concave. Thanks to the concavity of t_u 's, we can adopt the results in [18] to replace the right side of (15) by its iterative first-order approximation as,

$$t_u^{1/q_u} \leq t_u^{(*)1/q_u} + \frac{1}{q_u} t_u^{(*)1/q_u - 1} (t_u - t_u^{(*)}), \quad (18)$$

where $t_u^{(*)}$ denotes the value of t_u in the previous iteration. From (13), (17), and (18), the *relaxed*-CBD optimization problem in (8) can be finally recast as,

$$\max_{\mathbf{w}_u^r, r \in \mathcal{R}, u \in \mathcal{U}} \prod_{u \in \mathcal{U}} t_u \quad (19a)$$

$$\text{s.t.} \quad \sum_{u \in \mathcal{U}} \|\mathbf{w}_u^r\|_2^2 \leq P_r, \forall r \in \mathcal{R}, \quad (19b)$$

$$(13), (17), (18). \quad (19c)$$

Notice that the objective function and all the constraints in (19) admit SOC representation (see [15], [17]). Consequently, the resulting problem in (19) is a SOCP, which can be solved efficiently and very fast using standard solvers such as CPLEX [19] or MOSEK [20].

B. CBD Feasibility Problem

Here, the solution of the *relaxed*-CBD problem (8) which was obtained via solving the equivalent SOCP problem in (19), will be verified against the computing-capacity constraint in (7c) to obtain finally the beamforming solution of the original CBD problem cast in (7).

³In a SOC representation, the hyperbolic constraint $ab \geq c^2$, with $a, b \geq 0$, is equivalent to $\|[(a-b) \ 2c]^T\|_2 \leq a+b$.

Suppose that $\tilde{\mathbf{W}}$ is the beamforming solution of problems (8). If $\tilde{\mathbf{W}}$ satisfies the computing-resource constraint (7c), i.e., $\sum_{u \in \mathcal{U}} R_u(S, \tilde{\mathbf{W}}) \leq \Omega$, then $\tilde{\mathbf{W}}$ is also the optimal solution of (7). In this case, the WRSRU is limited by the per-RRH power budget only, and not by the computing-resource capacity of the VBS pool. On the other hand, when the computing-resource constraint is violated, we need to selectively drop the rates of some users. This can be done via a greedy algorithm that keeps dropping the users that have the smallest marginal utility function q_u from the current scheduling interval until the total data rate of all the scheduled users satisfies the computing-resource constraint. Since the optimal beamformer design \mathbf{W} is *jointly* calculated for all users, dropping the rates of some users requires recalculating the beamformers of *all* the RRHs.

Let $\{R_u^* \geq 0, u \in \mathcal{U}\}$ be the user rates obtained after the greedy-user-rate-dropping process is applied; the beamformer design \mathbf{W} that achieves these rates can be obtained via solving the feasibility problem given below,

$$\text{find} \quad \{\mathbf{w}_u^r\}, u \in \mathcal{U}, r \in \mathcal{V}_u \quad (20a)$$

$$\text{s.t.} \quad \sum_{u \in \mathcal{U}} \|\mathbf{w}_u^r\|_2^2 \leq P_r, \forall r \in \mathcal{R}, \quad (20b)$$

$$\frac{|\Psi_u|^2}{\sum_{u' \in \mathcal{U}, u' \neq u} |\Psi_{u,u'}|^2 + \sigma^2} \geq \gamma_u^*, \forall u \in \mathcal{U}, \quad (20c)$$

where $\gamma_u^* = 2^{R_u^*} - 1$.

The feasibility problem in (20) is *not convex*; however, by exploiting its special structure, we can transform this problem into a SOCP form, which can be solved efficiently. The transformation is presented as follows. Firstly, let \mathbf{w}^r be the long column vector such that $\mathbf{w}^r = [(\mathbf{w}_1^r)^T, (\mathbf{w}_2^r)^T, \dots, (\mathbf{w}_U^r)^T]^T$, $\forall r \in \mathcal{R}$. Constraint (20b) can be rewritten in a SOC form as

$$\|\mathbf{w}^r\|_2 \leq \sqrt{P_r}, \forall r \in \mathcal{R}. \quad (21)$$

Furthermore, (20c) is equivalent to

$$\left(1 + \frac{1}{\gamma_u^*}\right) |\Psi_u|^2 \geq \sum_{u' \in \mathcal{U}} |\Psi_{u,u'}|^2 + \sigma^2, \forall u \in \mathcal{U}. \quad (22)$$

Since $\mathbf{h}_u^r \mathbf{w}_u^r \geq 0$, as we considered previously, we can take the square root of both sides in (22), which yields,

$$\Psi_u \sqrt{1 + \frac{1}{\gamma_u^*}} \geq \sqrt{\sum_{u' \in \mathcal{U}} |\Psi_{u,u'}|^2 + \sigma^2} = \|[\Psi_{u,1}, \dots, \Psi_{u,U}, \sigma]\|_2. \quad (23)$$

It can be seen that (23) follows the SOC form; hence, using (21) and (23), we are now ready to recast the feasibility problem in (20) in the standard SOCP form as follows,

$$\text{find} \quad \{\mathbf{w}_u^r\}, u \in \mathcal{U}, r \in \mathcal{V}_u \quad (24a)$$

$$\text{s.t.} \quad \|\mathbf{w}^r\|_2 \leq \sqrt{P_r}, \forall r \in \mathcal{R}, \quad (24b)$$

$$\|[\Psi_{u,1}, \dots, \Psi_{u,U}, \sigma]\|_2 \leq \Psi_u \sqrt{1 + \frac{1}{\gamma_u^*}}, \quad (24c)$$

The solution \mathbf{W}^* for (24) can be obtained using standard SOCP techniques such as the interior-point methods [21] or the SOCP solvers (e.g., CPLEX, MOSEK). In summary, the optimal beamformer design of the CBD problem in (7) for a given radio clustering decision \mathcal{S} can be obtained by the procedures described in Algorithm 1.

Algorithm 1 Cooperative Beamformer Design (CBD).

- (1) Solve the SOCP problem in (19) to find $\tilde{\mathbf{W}}$
 - (2) Verify constraint (7c)
 - If $\sum_{u \in \mathcal{U}} R_u(\mathcal{S}, \tilde{\mathbf{W}}) \leq \Omega$, return $\mathbf{W}^* = \tilde{\mathbf{W}}$.
 - *Otherwise*: Drop users' rates using the greedy algorithm
 - *Repeat*: Update $R_{u'}(\mathcal{S}, \tilde{\mathbf{W}}) = R_{u'}(\mathcal{S}, \tilde{\mathbf{W}}) - \tau$, where τ is small decreasing step and $q_{u'} = \min\{q_u : q_u > 0, u \in \mathcal{U}\}$. Go to the next user when $R_{u'}(\mathcal{S}, \tilde{\mathbf{W}}) = 0$.
 - *Until*: $\sum_{u \in \mathcal{U}} R_u(\mathcal{S}, \tilde{\mathbf{W}}) \leq \Omega$
 - Solve feasibility problem (20), get \mathbf{W}^* . *Return*
-

IV. JOINT DYNAMIC RADIO CLUSTERING AND BEAMFORMING DESIGN

In the previous section, the CBD problem has been transformed into an equivalent SOCP form. As a result, our considered *Dynamic-RC* problem in (6) can also be transformed into a Mixed-Integer SOCP (MI-SOCP) problem with binary variables s_u^r 's. In a network with U users and R RRHs, there are 2^{UR} possible clustering patterns. The optimal solution to the clustering decision can be found via exhaustive search or using standard global optimization solvers. However, these approaches usually have a complexity growing exponentially with the problem size, which is not a practical approach. Hence, in this section, we present a method to solve the *Dynamic-RC* problem given in (6) by *iteratively* solving the CBD problem using Algorithm 1. In particular, we take advantage of the $l1$ -norm reweighting technique to adjust the approximation of the clustering variables after each iteration.

Firstly, given the relationship of s_u^r and \mathbf{w}_u^r , we can represent s_u^r by $l0$ -norm expression of \mathbf{w}_u^r as follows,

$$s_u^r = \left\| \left\| \mathbf{w}_u^r \right\|_2 \right\|_0. \quad (25)$$

The above expression allows us to leverage the $l1$ -norm reweighting technique, which has been effectively applied in the literature to approximate the $l0$ -norm [16], i.e., $\|\chi\|_0 \approx \sum_k \rho_k \chi_k$, where $\chi \in \mathbb{R}^n$ and $\rho_1, \rho_2, \dots, \rho_n$ are positive weights. With $n = 1$, by choosing $\chi_k = \|\mathbf{w}_u^r\|_2^2$, we get $s_u^r \approx \rho_u^r \|\mathbf{w}_u^r\|_2^2$, in which the weight ρ_u^r is adjusted iteratively as

$$\rho_u^r = \frac{1}{\|\hat{\mathbf{w}}_u^r\|_2^2 + \epsilon}, \forall u \in \mathcal{U}, r \in \mathcal{R}, \quad (26)$$

with $\|\hat{\mathbf{w}}_u^r\|_2^2$ obtained from the previous iteration. In (26), the parameter ϵ is a very small positive number introduced to

provide stability and to ensure that in case $\|\mathbf{w}_u^r\|_2^2 = 0$, it does not strictly prohibit a non-zero estimate in the next iteration.

The *Dynamic-RC* problem in (6) – given now ρ_u^r 's – can be rewritten as,

$$\max_{\mathbf{w}_u^r, \rho_u^r} \sum_{u \in \mathcal{U}} q_u R_u(\mathcal{S}, \mathbf{W}) \quad (27a)$$

$$\text{s.t.} \quad \sum_{u \in \mathcal{U}} \|\mathbf{w}_u^r\|_2^2 \leq P_r, \forall r \in \mathcal{R}, \quad (27b)$$

$$\sum_{u \in \mathcal{U}} R_u(\mathcal{S}, \mathbf{W}) \leq \Omega, \quad (27c)$$

$$\sum_{u \in \mathcal{U}} \rho_u^r \|\mathbf{w}_u^r\|_2^2 \leq N_r. \quad (27d)$$

Note that constraint (27d) can be written in SOC form as,

$$\left\| \left[\mathbf{w}_1^r \sqrt{\rho_1^r}, \dots, \mathbf{w}_U^r \sqrt{\rho_U^r} \right] \right\|_2 \leq \sqrt{N_r}, \forall r \in \mathcal{R}. \quad (28)$$

Thus, the problem in (27) is similar to the CBD problem in (7) with the additional SOC constraint (28), which can be solved efficiently using Algorithm 1. To clarify the idea, we present the iterative method to solve the *Dynamic-RC* problem in Algorithm 2 below.

Algorithm 2 Dynamic Radio Cooperation via Iterative SOCP

- (1) **Initialization:** set $\rho_u^r = 0, \forall u \in \mathcal{U}, r \in \mathcal{R}$
- (2) **Iteration:**
 - a) Solve problem (27) with the current value of ρ_u^r using Algorithm 1. In particular, Step (1) in Algorithm 1 will solve problem (19) with the additional constraint (28).
 - b) Update the weights ρ_u^r 's using the solution $\hat{\mathbf{w}}_u^r$'s obtained in the previous step as,

$$\rho_u^r = \left(\|\hat{\mathbf{w}}_u^r\|_2^2 + \epsilon \right)^{-1}, \forall u \in \mathcal{U}, r \in \mathcal{R}. \quad (29)$$

- (3) **Check convergence:** Repeat Step (2) until convergence or the max number of iterations is reached.
-

Note that RRH r is included in the serving cluster of user u , i.e., $r \in \mathcal{V}_u$, if the beamformer from RRH r to user u , \mathbf{w}_u^r , is nonzero. Since $\rho_u^r = 0$ in the first iteration in Algorithm 2, the constraint (28) is automatically satisfied. Thus, initially each RRH can be selected into more than N_r clusters. After that, the weights $\{\rho_u^r\}$ are updated inversely proportional to the beamforming power as in (29). Therefore, among the beamformers from all the RRHs to a target user, those with highest powers are most likely to be identified as nonzero in the next iteration. This allows for successive better estimation of the clustering decision, i.e., identifying the nonzero beamformers from RRHs to users. As will be shown later in our simulation results, the beamforming powers quickly converge within a few iterations.

Complexity analysis: The computational complexity of Algorithm 2 mainly lies in Step (2a) where a SOCP problem is solved. Assuming the same number of antennae N_r on the RRHs, the total number of variables in this SOCP problem is URN_r , where U and R are the numbers of users and

RRHs. Thus, the computational complexity of the interior-point method to solve such a SOCP problem is approximately $\mathcal{O}\left((URN_r)^{3.5}\right)$ [21]. This is significantly advantageous for a large network compared to the optimal design using existing solvers, which are characterized by a prohibitively exponential-time complexity.

Furthermore, in practical networks, a RRH r should not be included in the serving cluster of user u if r is very far away from u . Assuming a network of hexagonal cells, we can pre-select only the 7 RRHs having strongest channel coefficients to user u to be the candidate serving cluster of user u , denoted as \mathcal{C}_u . After the pre-selection process, Algorithm 2 will identify the optimal serving cluster \mathcal{V}_u within the subsets of \mathcal{C}_u . This can significantly reduce the complexity of Algorithm 2 to $\mathcal{O}\left(7UN_r^{3.5}\right)$. We adopt the pre-selection of serving cluster candidates in the simulation and numerical results show that this approach performs very close to the optimal solution.

V. PERFORMANCE EVALUATION

In this section, simulation results are presented to evaluate the performance of our proposed *Dynamic-RC* algorithm. We consider a network of hexagonal cells with a RRH in the center of each cell. The neighboring RRHs are separated 1 Km apart from each other. We assume that all the wireless channels in the system experience *block fading* such that the channel coefficients stay constant during each scheduling interval but can vary from interval to interval, i.e., the *channel coherence time* is not shorter than the scheduling interval. We assume that all the RRHs have the same number of transmit antennae N_r and transmit power budget P_r . The channel coefficients are calculated following the path-loss model, given as L [dB] = $148.1 + 37.6 \log_{10} d_{[\text{km}]}$, and the log-normal shadowing variance set to 8 dB. In addition, it is assumed that the channel bandwidth B is 10 MHz, is reused across all the users, and the noise spectral density is -100 dBm/Hz.

WSRSU performance: Firstly, we consider a system without the computing-resource constraint and evaluate the performance of the four radio cooperation algorithms below.

- *Optimal*: The WSRSU of the optimal scheme is obtained by using the solver MOSEK to solve the equivalent MISOCP presentation of problem (6).
- *Dynamic-RC*: Our proposed dynamic radio cooperation, where the solutions are obtained from our iterative, low-complexity Algorithm 2.
- *CVSINR*: A downlink cooperation scheme proposed in [12] where the cluster for each user is formed heuristically based on the relative signal strength and the clustered virtual SINR (CVSINR) algorithm is used to design the beamforming vectors.
- *Greedy*: A greedy clustering algorithm proposed in [14], which solves an equivalent set covering problem to select the set of non-overlapping base station clusters. This scheme uses zero-forcing as the criterion to design beamformers and a greedy algorithm is used for user scheduling.

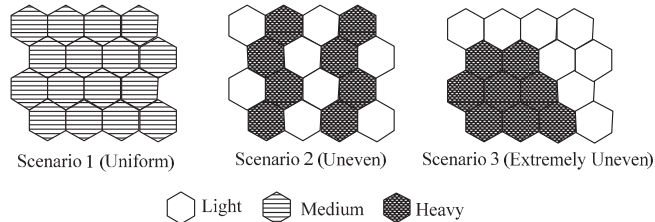


Fig. 3. Different user distribution scenarios: Scenario 1 (uniform) with all *medium* (loaded) cells; Scenario 2 (uneven), *light* and *heavy* (loaded) cells are intermixed together; Scenario 3 (extremely uneven), *heavy* cells are grouped together, and the heavy cell group is surrounded by *light* cells.

We evaluate the four schemes above in a network of 16 cells with three different user distribution scenarios as shown in Fig. 3. In particular, *Scenario 1* consists of all *medium* (loaded) cells where users are distributed uniformly over all the cells; *Scenarios 2* and *Scenarios 3* consist of *light* and *heavy* (loaded) cells, however the *heavy* cells are intermixed with *light* cells in *Scenarios 2* to represent micro-tidal effect while they are grouped together in *Scenarios 3* to represent the macro-tidal effect. In our simulation, we perform 500 drops, in each drop 32 users are placed randomly in the network with 1 user in a light cell, 2 users in a medium cell and 3 users in a heavy cell. The utility marginal functions q_u 's are chosen randomly such that $0 < q_u \leq 1, \forall u \in \mathcal{U}$.

Fig. 2-(a), (b), (c) plot the WSRSU performance of the four considered radio cooperation schemes in Scenario- 1, 2, 3, respectively. It can be seen that our proposed *Dynamic-RC* scheme and the *Optimal* scheme significantly outperform the *CVSINR* and *Greedy* schemes in all three scenarios. This is because the heuristic clustering of the RRHs in the later two schemes is suboptimal, plus their beamforming design algorithms only aim to minimize the intra-cluster interference *but not* the inter-cluster interference. On the other hand, our proposed *Dynamic-RC* scheme takes into account the global network condition that is available at the VBS pool, which provides better clustering decision and beamforming design. Compared to the *optimal* scheme, our proposed *Dynamic-RC* strategy via Algorithm 2 shows a small loss in WSRSU performance but has a significant advantage in reducing the execution time. In fact, in our simulation for the considered system configuration ($U=32, R=16$), MOSEK solver takes more than 100 s to obtain the optimal solution of the MISOCP problem, while each iteration in Algorithm 2 takes less than a second and the algorithm overall converges within 15 iterations.

Impact of Maximum Cluster Size: Fig. 4-(a), (b) plot the CDF of average user rate (w.r.t. 32 users) achieved by *Dynamic-RC* scheme with different choices of the maximum cluster size, V_{max} . In each case, only V_{max} RRHs having the strongest channel coefficients to a user are chosen to be the candidates of that user's serving cluster. This pre-selection is done before running Algorithm 2 to finally find the best serving cluster for each user. When $V_{max} = 1$, there

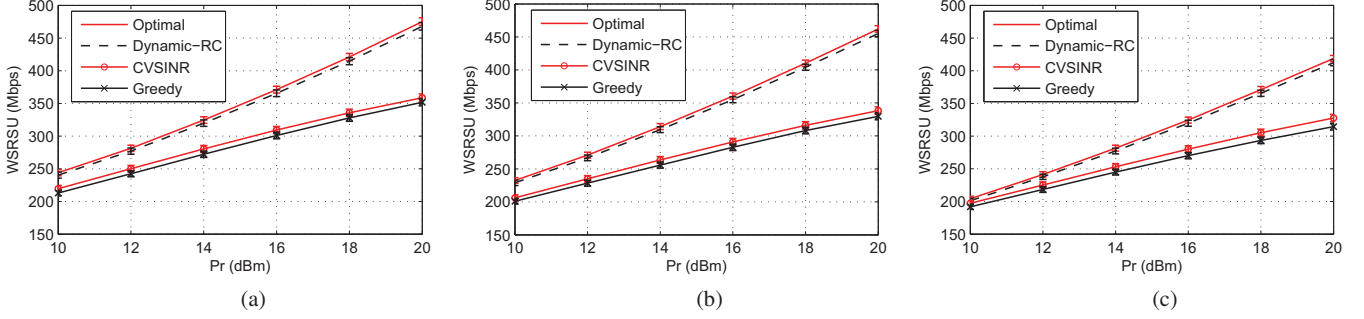


Fig. 2. Weighted Sum-Rate System Utility (WRSRU) of a C-RAN downlink system using different radio cooperation schemes, evaluating on three different user distribution scenarios. (a)-Scenario 1, (b)-Scenario 2, (c)-Scenario 3.

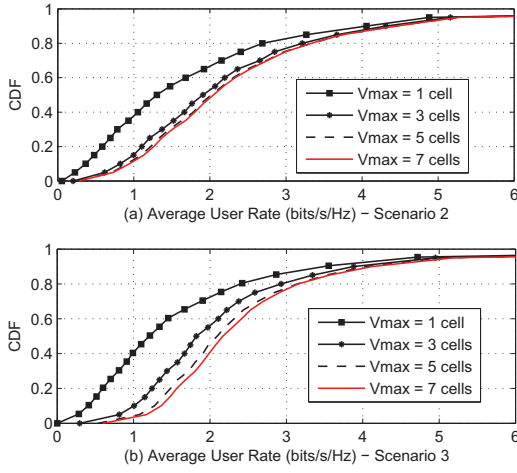


Fig. 4. CDF of Average User Rate obtained by Dynamic-RC scheme with different numbers of the maximum cluster size. ($P_r = 10$ dBm)

is no cooperation among the RRHs. The results in Fig. 4-(a), (b) are obtained by performing 500 drops on *Scenario 2* and *Scenario 3*, respectively, with $P_r = 10$ dBm. The utility marginal functions are updated in each drop according to the proportional fairness criterion, i.e., $q_u = 1/\bar{R}_u$ where \bar{R}_u is the long term average data rate for user $u \in \mathcal{U}$. It can be seen that the improvement in average user rate due to larger cluster size in Scenario 3 (macro-tidal effect) is greater than that of Scenario 2 (micro-tidal effect). For example, the dynamic cooperation scheme with $V_{max} = 3, 5, 7$ provides 130%, 137%, and 138.6% gain, respectively, for the 60th-percentile average user rate over the non-cooperation scheme ($V_{max} = 1$), in Scenario 2; while the corresponding gains in Scenario 3 are 145%, 159%, and 162%, respectively. Although not included here due to space limitation, we observe that when V_{max} exceeds 7 cells, the additional gain is negligible.

Benefits of Computing Resource Sharing: To evaluate the impact of the computing-resource constraint on the system performance, Fig. 5 compares the WRSRU performance of our considered system with the *centralized* computing-resource constraint, as expressed in (4), versus a conventional system

with a *distributed* computing-resource constraint, as expressed in (5). In particular, we consider a network of 4 cells with 2 users in each cells in random locations and q_u 's are chosen randomly. For a fair comparison, we set $\arg \Gamma(C)$ to 400 Mbps and $\arg \Gamma(C_r)$ to 100 Mbps, and ran the *Dynamic-RC* scheme in Algorithm 2 on both systems. Note that, in this setting, each of the 4 RRHs in the *distributed* system is provisioned to process maximum 100 Mbps of user baseband traffic at a time, while in the *centralized* system the VBS pool is provisioned to process maximum 400 Mbps baseband traffic at a time. We say that the computing resource is saturated in each system when the achieved sum-rate (SR) of all the users reaches the maximum provisioned processing traffic rate. As the transmit power increases, observe in Fig. 5 that the computing capacity of the VBS pool in the *centralized* system saturates earlier than the total computing capacity of the distributed system does (when the computing capacity is saturated at all the RRHs). In fact, the WRSRU and SR of the distributed system saturate almost at the same time while the WRSRU of the centralized system continues to increase after the saturation point (of the SR), and is significantly higher (up to 250% gain) than that of the distributed system. This demonstrates the great potential gains of C-RANs using our *Dynamic-RC* scheme over the conventional distributed RANs in terms of WRSRU, computing resource and transmit power utilization.

Convergence Behavior of Algorithm 2: Fig. 6 illustrates the convergence behavior of Algorithm 2 in identifying the RRH cluster for a user. We choose randomly a user u^* and monitor the beamforming powers from the 7 candidate RRHs for its serving cluster. The evolution of the beamforming powers in dBm/Hz from these RRHs to user u^* , calculated as $\|\mathbf{w}_{u^*}^r\|_2^2$, $r = 1, \dots, 7$, is shown in Fig. 6. Observe that after the 4-th iteration, only the beamformers from RRH 1 and RRH 4 maintain a non-trivial power, while the rest are forced to almost zero. In this case, the optimal serving cluster of user u^* is identified to be $\mathcal{V}_{u^*} = \{\text{RRH 1, RRH 4}\}$ within only a few iterations, which demonstrates the efficiency of our proposed *Dynamic-RC* algorithm in quickly making the clustering decision and beamforming design.

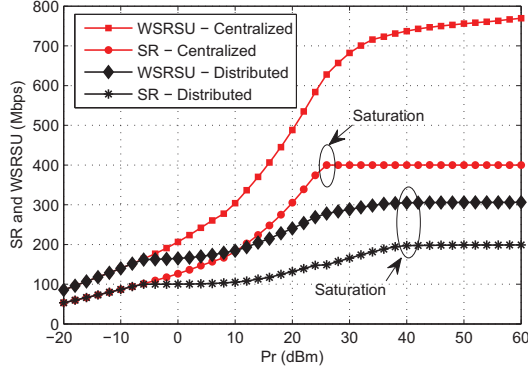


Fig. 5. Downlink WSR and WSRSU of a C-RAN system with centralized computing resource (*Centralized*) versus that of a traditional system with distributed computing resources (*Distributed*).

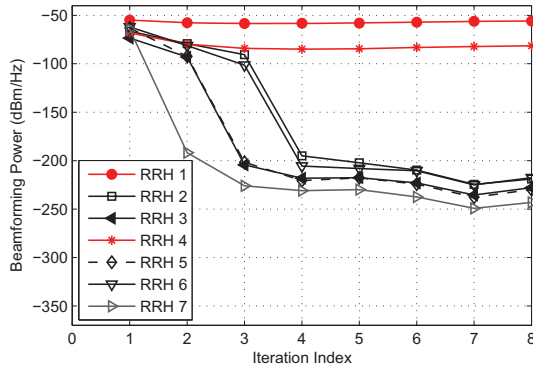


Fig. 6. Convergence behavior of the beamforming power at 7 candidate RRHs for the serving cluster of an example user.

VI. CONCLUSIONS AND FUTURE WORK

We proposed a novel dynamic radio cooperation strategy for Cloud Radio Access Networks (C-RANs) that takes advantage of real-time communication and computing-resource sharing among Virtual Base Stations (VBSs). The underlying optimization problem was formulated as a mixed-integer non-linear program, which is NP-hard. Our approach transforms the original problem into a Mixed-Integer Second-Order Cone Program (MI-SOCP) that is efficiently solved using a novel low-complexity, iterative algorithm. Simulation results showed that our low-complexity algorithm provides close-to-optimal performance in terms of weighted sum-rate system utility while significantly outperforming conventional radio clustering and beamforming schemes.

Future Work: The goal of our future work is to address the system-related issues and evaluate the feasibility and performance of the proposed strategy in a practical system. In fact, we are implementing a C-RAN testbed which consists of an open-source LTE platform OpenAirInterface running on a general-purpose desktop server to realize the VBS pool, and a number of USRP B210/X310 boards to realize the RRHs.

Acknowledgment: This work was supported in part by the National Science Foundation Grant No. CNS-1319945

REFERENCES

- [1] D. Lee, H. Seo, B. Clerckx, E. Hardouin, D. Mazzaresse, S. Nagata, and K. Sayana, "Coordinated multipoint transmission and reception in LTE-Advanced: deployment scenarios and operational challenges," *IEEE Communications Magazine*, vol. 50, no. 2, pp. 148–155, 2012.
- [2] China Mobile Research Institute, "C-RAN: The Road Towards Green RAN," *White Paper*, Sept. 2013.
- [3] K. Sundaresan, C. Liu, M. Arslan, M. Jiang, and S. Rangarajan, "Cloud-based radio access network for small cells," July 25 2013. US Patent App. 13/951,396.
- [4] D. Pompili, A. Hajisami, and H. Viswanathan, "Dynamic provisioning and allocation in Cloud Radio Access Networks (C-RANs)," *Ad Hoc Networks*, vol. 30, pp. 128–143, 2015.
- [5] S. Bhaumik, S. P. Chandrabose, M. K. Jataprolu, G. Kumar, A. Muralidhar, P. Polakos, V. Srinivasan, and T. Woo, "Cloudiq: a framework for processing base stations in a data center," in *Proc. ACM International Conference on Mobile Computing and Networking (MobiCom)*, 2012.
- [6] M. Madhavan, P. Gupta, and M. Chetlur, "Quantifying multiplexing gains in a wireless network cloud," in *Proc. IEEE International Conference on Communications (ICC)*, June 2012.
- [7] A. Hajisami, H. Viswanathan, and D. Pompili, "Cocktail Party in the Cloud": Blind Source Separation for Co-Operative Cellular Communication in Cloud RAN," in *Proc. IEEE International Conference on Mobile Ad Hoc and Sensor Systems (MASS)*, 2014.
- [8] Y. Shi, J. Zhang, and K. Letaief, "Group sparse beamforming for green Cloud-RAN," *IEEE Transactions on Wireless Communications*, vol. 13, no. 5, pp. 2809–2823, 2014.
- [9] S. Luo, R. Zhang, and T. J. Lim, "Downlink and Uplink Energy Minimization Through User Association and Beamforming in C-RAN," *IEEE Transactions on Wireless Communications*, vol. 14, no. 1, pp. 494–508, 2015.
- [10] V. N. Ha, L. B. Le, and N.-D. Dao, "Energy-efficient coordinated transmission for cloud-RANs: Algorithm design and trade-off," in *Proc. Annual Conference on Information Sciences and Systems (CISS)*, Mar. 2014.
- [11] J. Li, M. Peng, A. Cheng, Y. Yu, and C. Wang, "Resource Allocation Optimization for Delay-Sensitive Traffic in Fronthaul Constrained Cloud Radio Access Networks," *IEEE Systems Journal*, vol. PP, no. 99, pp. 1–12, 2014.
- [12] J. Gong, S. Zhou, Z. Niu, L. Geng, and M. Zheng, "Joint scheduling and dynamic clustering in downlink cellular networks," in *Proc. IEEE Global Telecommunications Conference (GLOBECOM)*, Dec. 2011.
- [13] H. Huang, M. Trivellato, A. Hottinen, M. Shafi, P. J. Smith, and R. Valenzuela, "Increasing downlink cellular throughput with limited network mimo coordination," *IEEE Transactions on Wireless Communications*, vol. 8, no. 6, pp. 2983–2989, 2009.
- [14] P. Baracca, F. Boccardi, and V. Braun, "A dynamic joint clustering scheduling algorithm for downlink CoMP systems with limited CSI," in *Proc. International Symposium on Wireless Communication Systems (ISWCS)*, Aug. 2012.
- [15] F. Alizadeh and D. Goldfarb, "Second-order cone programming," *Mathematical programming*, vol. 95, no. 1, pp. 3–51, 2003.
- [16] E. J. Candes, M. B. Wakin, and S. P. Boyd, "Enhancing sparsity by reweighted ℓ_1 minimization," *Journal of Fourier analysis and applications*, vol. 14, no. 5-6, pp. 877–905, 2008.
- [17] L. Tran, M. F. Hanif, A. Tolli, and M. Juntti, "Fast converging algorithm for weighted sum rate maximization in multicell MISO downlink," *IEEE Signal Processing Letters*, vol. 19, no. 12, pp. 872–875, 2012.
- [18] A. Beck, A. Ben-Tal, and L. Tretushvili, "A sequential parametric convex approximation method with applications to nonconvex truss topology design problems," *Journal of Global Optimization*, vol. 47, no. 1, pp. 29–51, 2010.
- [19] IBM ILOG CPLEX Optimizer Version 1 v12.4. Available: <http://www-01.ibm.com/software/commerce/optimization/cplex-optimizer/>.
- [20] MOSEK Optimization Software Version 7.0. Available: <http://www.mosek.com/>.
- [21] Y. Ye, *Interior point algorithms: theory and analysis*, vol. 44. John Wiley & Sons, 2011.