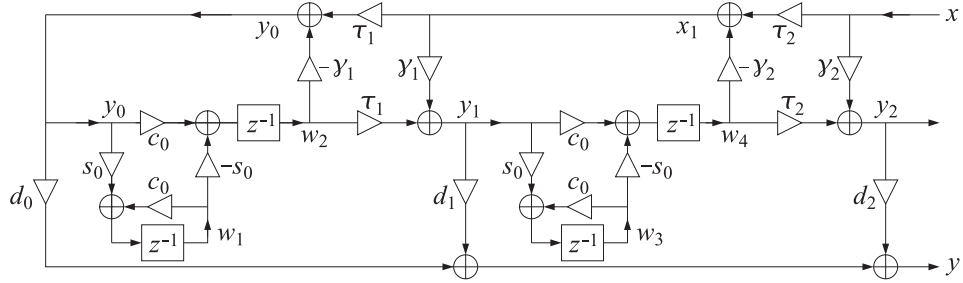


## Frequency-Shifted Normalized Lattice Form



**Sample processing algorithm:**

for each input sample  $x$  do:

$$y_2 = y_2x + \tau_2 w_4$$

$$x_1 = \tau_2 x - y_2 w_4$$

$$y_1 = y_1 x_1 \tau_1 w_2$$

$$y_0 = \tau_1 x_1 - y_1 w_2$$

$$y = d_0 x_0 + d_1 y_1 + d_2 y_2$$

$$w_2 = c_0 y_0 - s_0 w_1$$

$$w_1 = s_0 y_0 + c_0 w_1$$

$$w_4 = c_0 y_1 - s_0 w_3$$

$$w_3 = s_0 y_1 + c_0 w_3$$